



Installation and Servicing Instructions



BoilerMagXT Heating & Cooling System Filter



Thank you for choosing BoilerMagXT, please follow the instructions carefully to ensure that this BoilerMagXT magnetic filtration system is fitted and maintained correctly.

By completing and returning the guarantee card in the pack you qualify for a 10 year warranty against manufacturing defects. Failure to follow these instructions will invalidate the warranty.



BoilerMagXT is a magnetic filtration system for heating systems in larger premises such as industrial, commercial and municipal buildings. For other applications always consult the manufacturer before installing.



This product contains strong magnets. Care and attention should be taken at all times during installation and servicing. Do not place the magnetic cores on any ferrous surfaces or near ferrous objects.



Suitable personal protective equipment should be used during all installation and servicing.



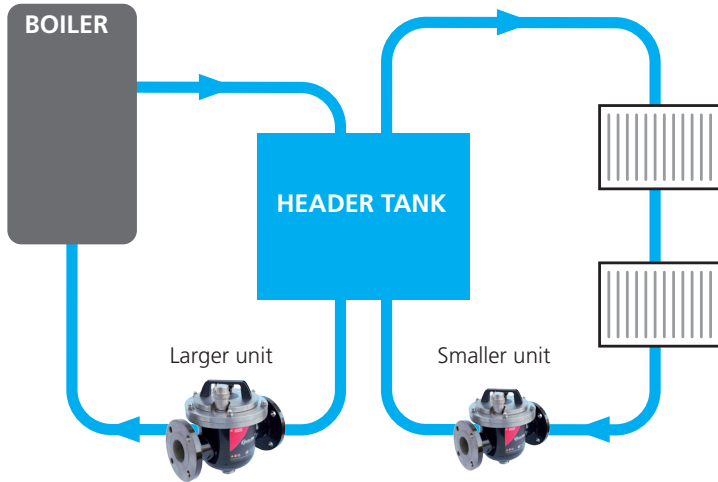
BoilerMagXT must be installed by a qualified person in accordance with all relevant current regulations.

Guide to Installation



Ensure the heating system is isolated prior to carrying out installation or maintenance work.

Where to Install



BoilerMagXT is typically installed on the return circuit as close to the boiler as possible. On larger systems, such as the one shown, smaller BoilerMagXT units may be installed elsewhere to give extra protection for radiators and pipework.

Please also ensure that the BoilerMagXT is located in a position which gives adequate access above to lift out the magnets during servicing and maintenance. Also access is required to the underneath of the unit to connect a hose or hold a bucket during draining. The best practice would be to install the unit with a minimum of five pipe diameters of straight run. Less than this could potentially cause the water to be turbulent as it enters the vessel, reducing its ability to remove sludge.

Venting Options

The BoilerMagXT unit is fitted with a manual vent, however, an additional Automatic Air Vent has been packaged along with unit separately. The auto-vent will automatically release the trapped air maintaining heating efficiency.

Please note: If using the Automatic Air Vent, operating pressure is reduced to 145 psi / 10 bar and maximum temperature to 212°F / 110°C respectively.

Installing BoilerMagXT

1. Identify a suitable location (see 'Where to Install' p3). The best practice would be to install the unit with a minimum of five pipe diameters of straight run. Less than this could potentially cause the water to be turbulent as it enters the vessel, reducing its ability to remove sludge.
2. Ensure enough clearance to carry out cleaning as the rods must be lifted out of the unit to clean. See dimensions in column B in the table below.
3. Mark and then cut out the correct length of pipe section to be removed to accommodate the BoilerMagXT unit and isolation valves. Ensure the cut is level and burr free. (Isolation valves are not included in the BoilerMagXT pack.)
4. Install appropriate isolation valves to the pipework and fit the valves to the BoilerMagXT inlet/outlet.
5. Position the BoilerMagXT in place then align and secure the fittings to connect the unit to the valves.
6. Open the isolation valves and turn on the heating system
7. Run the heating system at normal operating temperature and check installation integrity.

Servicing & Maintenance Instructions

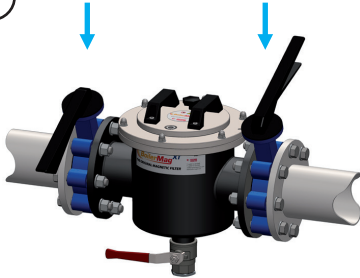


Cleaning and servicing must only be carried out by a qualified person in accordance with all relevant current regulations.

To maintain optimum efficiency we recommend cleaning annually. However when a BoilerMagXT is fitted to an existing heating system we recommend more regular checks as it is likely there will be a large build-up of ferrous oxide (black sludge) to clear out.

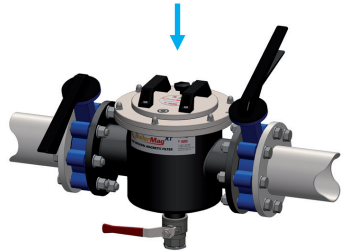
To service and maintain BoilerMagXT follow the instructions below:

1



Isolate the heating system and close the isolation valves on either side of the BoilerMagXT unit.

2



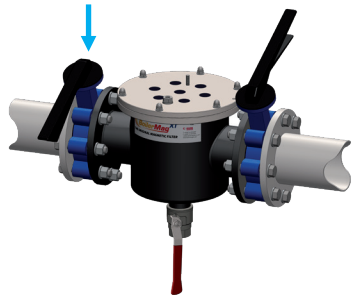
Remove the black tricone positioned on the lid.

3




Lift out the magnetic cores using the handle on top of the unit. *Warning see below*. Be careful not to place the cores on or near ferrous items.

4

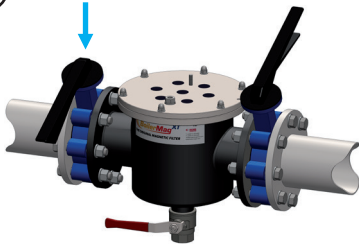


Either place a bucket underneath or connect a hose to the 1¼" drain valve on the underside of the BoilerMagXT. Remove the drain plug and open the drain valve. Partially open the inlet isolation valve and allow the contents to drain through the drain valve.

 For larger BMXT units, the weight may exceed safe single person lifting limits. Please check and if required do as 2 persons or alternatively as a mechanical lift.

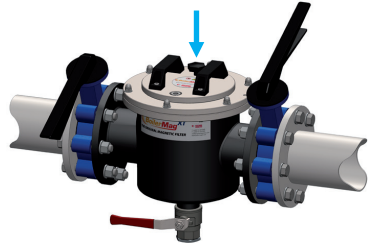
Servicing & Maintenance Instructions

5



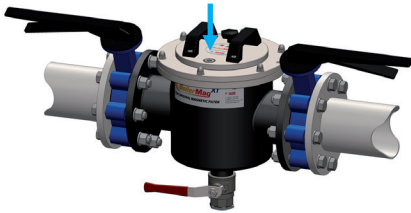
When the draining water runs clear turn off the inlet isolation valve and allow the remaining contents to drain. Close the drain valve and replace the plug.

6



Replace the magnetic core and hand tighten the black tricone to retain. Re-open both isolation valves.

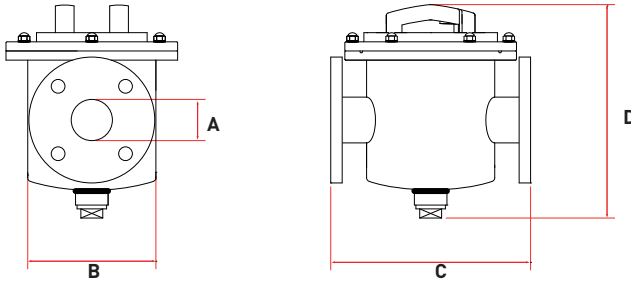
7



If required open the vent shown on the top of the unit to release any trapped air*.

*Automatic Air Vent option also available

Product data



Item Code	Part No.	Inlet / Outlet A	Filter Dia. B	Dimension C	Height D	No. magnetic rods	Flow rate at 3ft/sec gallons/min. (m ³ /hour)	Flow rate at 5ft/sec gallons/min. (m ³ /hour)	Flow rate at 8ft/sec gallons/min. (m ³ /hour)	Weight lbs/ kgs
BMXT/1.5NPT	BMXT100/NPT	1½" NPT	4" / 100mm	7½" / 190mm	11" / 280mm	3	17 (4)	28 (6)	44 (10)	19 / 8
BMXT/2NPT	BMXT150/NPT	2" NPT	6¾" / 170mm	10¾" / 270mm	11" / 280mm	5	20 (5)	48 (11)	78 (18)	40 / 18
BMXT/2.5	BMXT150/2.5/ANSI	2½" / 63mm	6¾" / 170mm	12¾" / 315mm	11" / 280mm	5	46 (10)	77 (17)	122 (28)	44 / 20
BMXT/3	BMXT200/3/ANSI	3" / 75mm	8¾" / 220mm	14¾" / 360mm	13¾" / 335mm	7	65 (15)	110 (25)	175 (40)	82 / 37
BMXT/4	BMXT200/ANSI	4" / 100mm	8¾" / 220mm	14¾" / 380mm	13¾" / 335mm	7	120 (27)	200 (45)	315 (72)	82 / 37
BMXT/6	BMXT300HF/ANSI	6" / 150mm	12¾" / 325mm	19¾" / 490mm	16¾" / 420mm	9	260 (59)	440 (100)	700 (159)	133 / 60
BMXT/8	BMXT300HF/8/ANSI	8" / 200mm	12¾" / 325mm	20¾" / 525mm	18¾" / 460mm	9	475 (108)	775 (176)	1250 (284)	140 / 64
BMXT/10*	BMXT400/10/ANSI*	10" / 250mm	16" / 406mm	30" / 760mm	29¾" / 754mm	16	750 (170)	1225 (278)	1950 (443)	190 / 86
BMXT/12*	BMXT400/12/ANSI*	12" / 300mm	16" / 406mm	30" / 760mm	29¾" / 754mm	16	1100 (250)	1780 (404)	2800 (636)	195 / 88

* Made to order sizes

Performance

Magnetic performance

9,000 Gauss high strength

Performance reading

On tube surface

Magnetic material

Rare Earth Neodymium Iron Boron N42SH

Temperature

41° to 302°F / 5° to 150°C (212°F / 110°C if using automatic air vent)

Operating pressure

+/- 174psi / 12 bar (145psi / 10 bar if using automatic air vent)

29psi / 2 bar (if used in steam applications)

Drain valve

¾" NPT on BMXT/1.5" versions, all others 1¼" NPT

Materials

Housing

304 grade stainless steel

Tube cartridge

316 grade stainless steel – aerospace quality

Other parts

304 grade stainless steel

Surface finish

Internal - bead blast

External - powder coated, black

Sealing

EPDM

Includes

Optional automatic air vent

Options

High temperature Samarium Cobalt magnetic material +482°F / 250°C

Warranty

Industry leading 10 years

See our full range of products



(1" & 1¼" connections)



(1½" connections)



System Treatment Chemicals
BM1 Inhibitor & BM3 Cleaner



www.boilermag.com/na

Eclipse Tools North America Inc.
442 Millen Rd, Unit #9, Stoney Creek, ON L8E 6H2
T 1800-260-2124 sales@eclipsetoolsinc.com
www.eclipsetoolsinc.com



While every effort has been made to ensure the accuracy of the information in this publication please note that specifications may change without notice.

v11



Innovative Magnetic Solutions

