

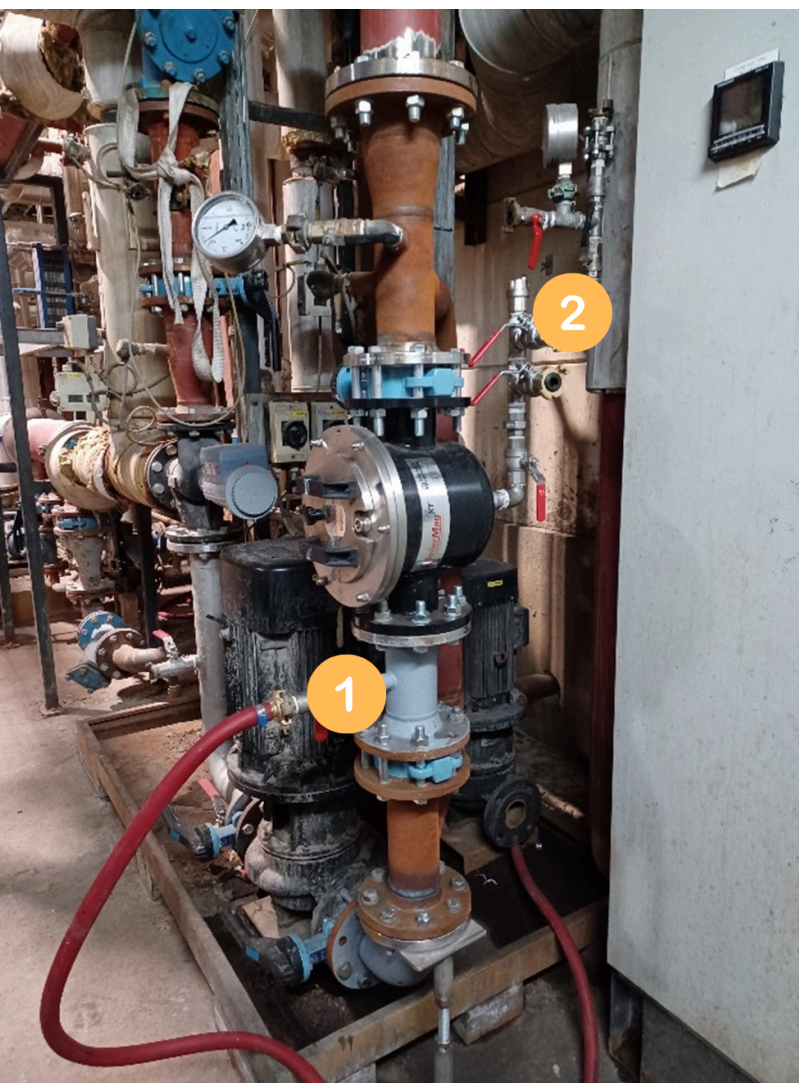
## Installation and Servicing Instructions

### Can the BoilerMagXT be installed on a vertical pipe?

One of the questions we often get is can the BoilerMagXT be installed on a vertical pipe.

**We are always going to recommend a horizontal installation** for ease of cleaning, and servicing. But, what about the congested boiler room where there isn't a clear run of horizontal pipework and the only option is a vertical installation, or no installation at all?

**Even though it's not ideal, there is a way to do it if we keep a few things in mind.**



Please ensure that there are isolation valves above and below, as shown in the picture. This makes sure we don't drain the entire system when we pull the magnet pack.

**In the picture we have a red hose attached to the drain valve. (1) Once the BoilerMag is isolated we can use this to drain the BoilerMag vessel.**

To prevent reintroducing the collected magnetite the only way we'd recommend cleaning the magnet is to remove the entire two-part lid. First remove the 6 retaining nuts. Once the lid is away from the system, we can pull the magnets from the dry wells and wipe down the tubes.

After cleaning we replace the entire lid, including the magnets. We can then open the top valve and refill the vessel. **(2) The attached image also shows a pipe running from the BoilerMags drain port with our Automated Air Vent attached. This allows us to vent the air from the vessel as it fills.** We can then open the bottom valve to get the system up and running.